



Kinetiq

Executive Summary

Kinetiq provides energy companies with the technology to succeed in a constantly changing industry. Our proven energy management solutions allow retailers and network providers to develop and manage unique and competitive combinations of pricing, products and services for the high value commercial and industrial sectors. Our data management and analysis products create wide ranging value for energy companies and their customers (e.g. easy to understand profiles of consumption and demand with link to spot prices).

Kinetiq offers a powerful suite of customer and data management tools developed specifically to make energy utilities more effective in deregulated and transitional markets.

Advanced data management technology is used to store, manage and aggregate energy consumption, pricing and network information.

With over twenty years experience in energy markets - both regulated and deregulated - Kinetiq provides robust, scalable, proven and effective products used by energy companies throughout the world. Installations are located across Australia, Singapore, Canada and New Zealand. Kinetiq Ltd is part of a group of global enterprises with over 50 employees turning over more than 7.5 million USD annually.

Kinetiq values a highly visible and successful track record with our clients. These relationships have seen significant efficiencies applied in 'time of use' billing management coupled with a pervasive degree of flexibility (e.g. when interfacing with other multiple tiered vendor software).

Our vision for ongoing relationships with our clients is absolute commitment to the products and services we provide. In short, Kinetiq provides a rich heritage of industry knowledge geared to proactively promote functionality improvements. We are able to react quickly to industry requirements (e.g. new tariff calculations).

Kinetiq's "added value" continues to provide clients with a fluid technological edge and a clear growth path from a recognized Microsoft Gold Partner.

**Proven functionality
performing mission
critical tasks...**

- Advanced Tariff Structures
- Online Customer access to usage graphing and invoices
- Contract Management
- Wholesale and inter-company reconciliation
- Consumption and load analysis
- Distribution network planning
- Billing

Kinetiq Limited

Unit 13/33-35 Apollo Drive, Mairangi Bay, Auckland
P O Box 28 684, Remuera, Auckland 1136
NEW ZEALAND



Kinetiq Energy Management System

The Kinetiq Energy Management System has been designed to simplify the management of tariffs, customer contracts and the billing process.

The Kinetiq system uses a component based tariff structure. This parameter driven multi tier tariff structure allows users to create reusable components that are easy to set up and maintain. A simple copy function speeds up the creation of similar new components. A key feature of the system is its simplicity in having a date driven configuration.

The component based tariff structures support a wide range of tariff types which allows the simple creation and management of the following:

- ✓ Real time pricing
- ✓ Multi-commodity electricity and gas sales
- ✓ Maximum demand
- ✓ Stepped tariffs
- ✓ Seasonal tariff variations
- ✓ Daylight saving variations
- ✓ Co-generation billing
- ✓ Sundry sales and recurring charges
- ✓ LDC (distribution company) billing
- ✓ Third party supplier billing
- ✓ Interruptible load credits / penalties
- ✓ Consumption related discounts

Tariff Types Supported

- Global rate and Customer specific rate tariffs
- Read tariffs
- Hours Use tariffs
- Capacity tariffs
- Un-contracted capacity tariffs
- Global fixed and customer specific fixed tariffs
- Reactive tariffs
- Excess consumption and demand tariffs
- Threshold tariffs
- Global discount and customer specific discount tariffs
- Peak tariffs
- Period tariffs
- Power Factor adjustment tariffs
- Max & minimum reactive tariffs
- Structure tariffs
- Rule based tariffs

Kinetiq Limited

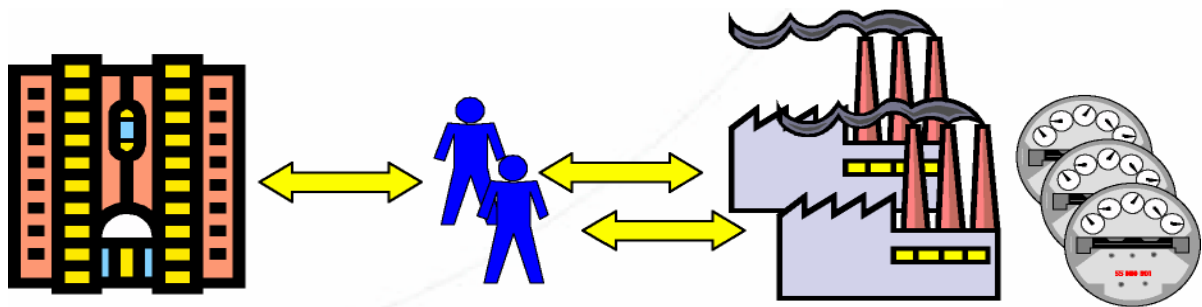
Unit 13/33-35 Apollo Drive, Mairangi Bay, Auckland
P O Box 28 684, Remuera, Auckland 1136
NEW ZEALAND



Contract Structure

The Kinetiq System has been designed to manage the most complex account relationships with a multi-level structure. This allows for many combinations of customized contracts to be aggregated and billed to single and multiple entities. It manages a flexible relationship between Customer – Account – Premise – Meter.

The contract structure supports unlimited numbers of meters per customer.



The contract structures may be configured to invoice to any tier within the group. Contracts can be maintained as an Open Invoice allowing the billing process to continue and permitting the invoice to remain open until all the meters have been billed.

Complex Billing

The combination of the Kinetiq Tariff and Contract structures simplifies the management and billing of the most complex accounts including the following difficult issues:

- Group accounts with thousands of meters and many complex tiers in the relationships
- Replicating and verifying Transmission and Distribution Use of System (D/TUoS) charges for multiple LDC's.
- Co-Generation of embedded generation contracts
- Sub-metered (billed and unbilled) accounts
- Un-metered loads and losses

Kinetiq Limited

Unit 13/33-35 Apollo Drive, Mairangi Bay, Auckland
P O Box 28 684, Remuera, Auckland 1136
NEW ZEALAND



Automated Billing

The Kinetiq System can be configured for automated billing in two ways:

Billing Cycles	Contracts can be configured to bill on target date ranges. This retains the flexibility necessary to solve the billing issues that can occur with complex accounts.
External Trigger	The Kinetiq System supports calls made from 3 rd party systems to initiate the billing process.

Manually Initiated Billing

Billing can be initiated manually for one or more accounts on a regular and/or ad-hoc basis.

Multi Commodity

The Kinetiq System is unit independent allowing the billing of multiple commodities (e.g. Gas & Electricity), either independently or on the same bill.

Data Management

Kinetiq's System imports both Time of Use (Interval) and basic consumption data from collection systems which is then stored in a compressed and time bound **powerfile** format. Data is subsequently retrieved for billing, analysis, reconciliation and enquiries. Tariff, billing and customer details are stored in an Oracle database.

Data can readily be aggregated by attributes which may include network point of supply, industry code or customer type. The aggregated data can then be analyzed to support customer management, energy trading or network management requirements.

Kinetiq Limited

Unit 13/33-35 Apollo Drive, Mairangi Bay, Auckland
P O Box 28 684, Remuera, Auckland 1136
NEW ZEALAND



Kinetiq Web

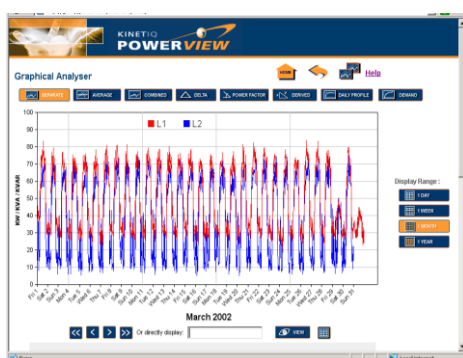
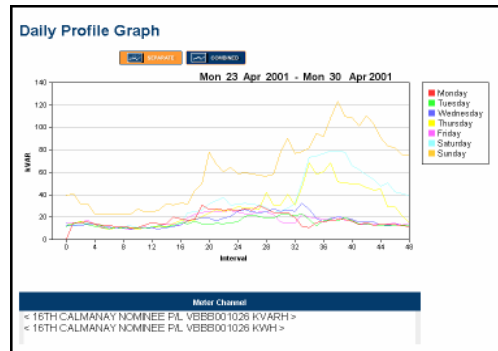
The Kinetiq Web module provides a web enabled configuration presenting high value Commercial & Industrial customers with easy-to-understand profiles of their energy consumption and demand. This tool empowers customers to better manage and control energy costs.

Kinetiq Web's secure yet user-friendly web interface extracts values from stored meter reading data by converting it into selectable graphical formats that permit identifying load shifting opportunities, peak demands, and time-of-use analysis.

Key Features

- Simplified graphing functionality
- Customer-specific meter channels
- Export Interval data
- View historic invoices and contracts
- Display ranges - 1 day, week, month or year
- Scrolling – first, last, previous, next
- Pop-up Tool Tips
- Screen-specific help text pages
- Multiple graphs in separate pages
- Comparative graphing
- Demand graphing

The web enabled configuration provides graphical analysis options selected to support the customer Demand Side Management and Energy Conservation initiatives in conjunction with the spot price market.



Developed for energy companies nurturing 'win-win' relationships with their key customers, the Kinetiq Web module sits alongside existing billing and customer management systems. Kinetiq Web has been designed for ease of implementation and low cost of

ownership.

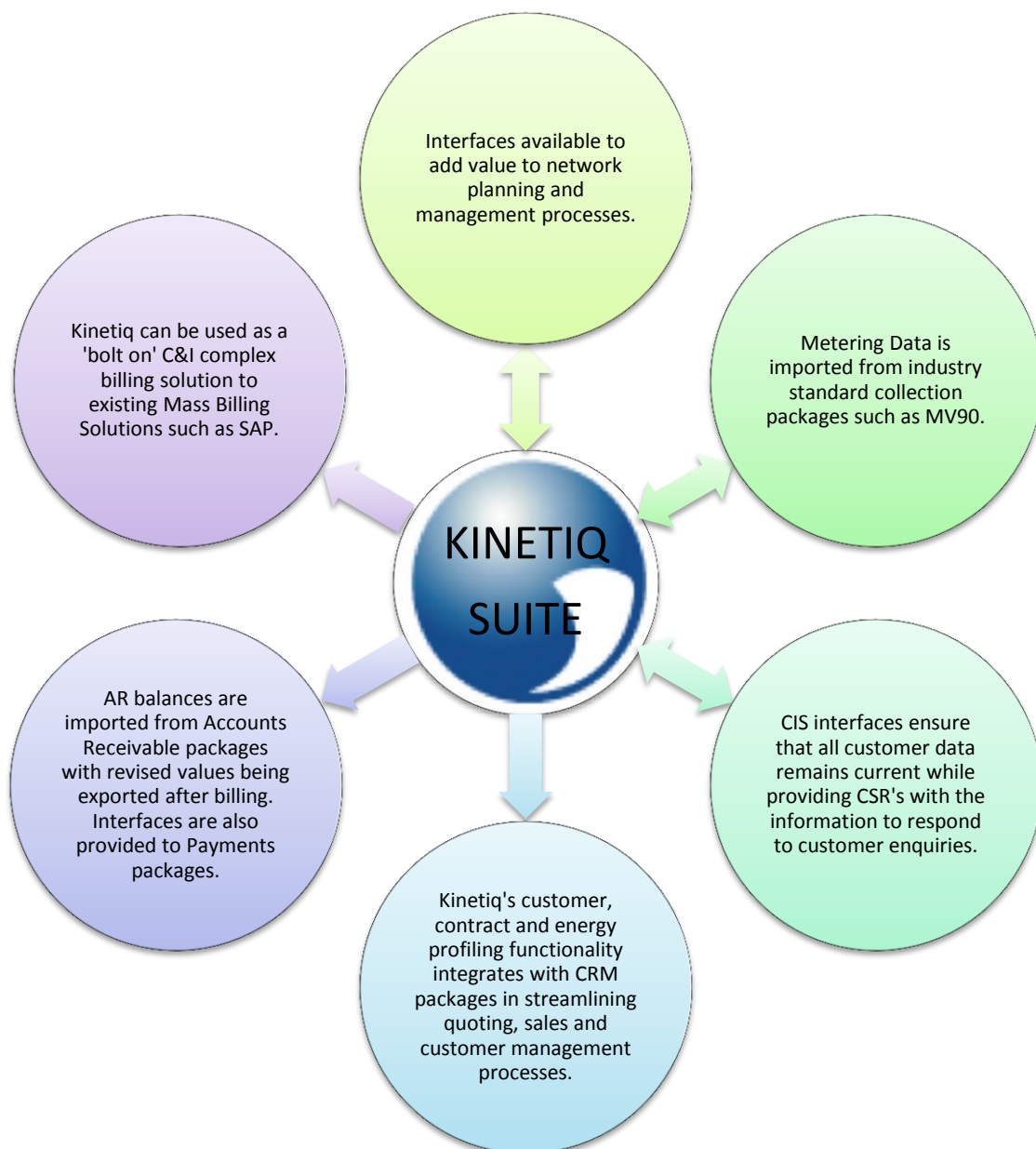
Kinetiq Limited

Unit 13/33-35 Apollo Drive, Mairangi Bay, Auckland
P O Box 28 684, Remuera, Auckland 1136
NEW ZEALAND



Integration

Kinetiq's products have been developed for ease of integration with associated customer, data and asset management systems which minimizes implementation effort and reduces overall cost of ownership.



Kinetiq Limited

Unit 13/33-35 Apollo Drive, Mairangi Bay, Auckland
P O Box 28 684, Remuera, Auckland 1136
NEW ZEALAND